



Apple Remote Access MultiPort Server

Features

Ease of installation and use

- Takes only minutes to set up a server and to add users or ports as needed
- Provides built-in context-sensitive help

Multilevel security

- Provides a variety of sophisticated security features, making it one of the most secure remote access servers available
- Is supported by leading third-party security vendors, so administrators can choose to augment its built-in capabilities with additional security modules

Scalable solution

- Allows a Macintosh computer, Power Macintosh computer, or a Workgroup Server to support from 4 to 16 simultaneous dial-up connections¹
- Runs on a variety of Macintosh computers, so you can choose the system that's appropriate for your needs

Powerful administrative capabilities

- Allows flexible port configurations
- Offers comprehensive user-management facilities
- Supports industry-standard SNMP
- Tracks resource usage and automatically generates an activity log that can be exported for further analysis

Flexible client capabilities

- Supports a variety of connections, including cellular, X.25, and ISDN²
- Is fully integrated with Macintosh System 7, so remote users can work with such familiar tools as the Chooser, Alias Manager, and the Finder

¹The Apple Remote Access MultiPort Server includes support for 4 ports and is available for Macintosh and Power Macintosh computers and Workgroup Servers (Macintosh operating system-based). Support for 8, 12, or 16 ports requires purchase of 1, 2, or 3 Apple Remote Access MultiPort Server 4-Port Expansion Kits respectively. These expansion kits are not available for Power Macintosh computers or Workgroup Servers 6150, 8150, or 9150.

²X.25, ISDN, and cellular connections require additional Apple or third-party products.

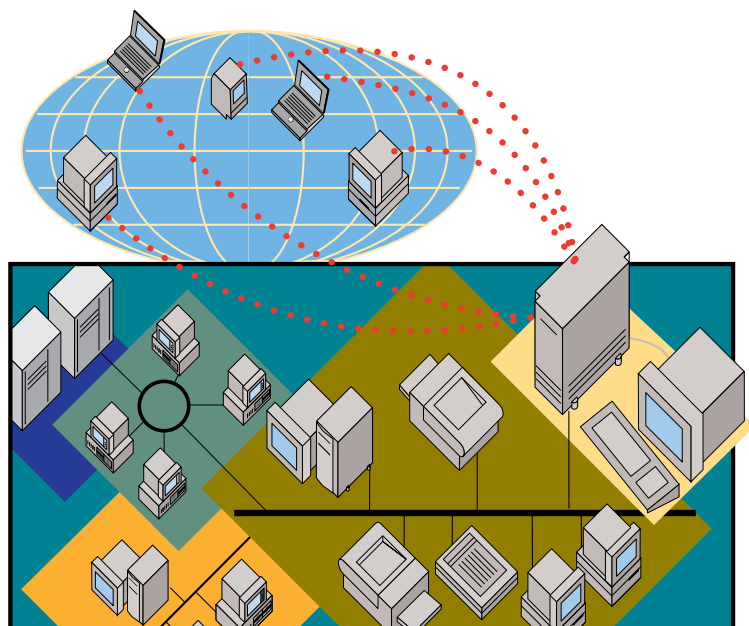
The Apple Remote Access MultiPort Server provides a flexible, scalable, and secure way to offer network access to large numbers of remote or mobile users. Used in conjunction with one or more Apple Remote Access Serial Cards, it allows a Macintosh computer or a Workgroup Server to support from 4 to 16 simultaneous dial-up connections.¹ This provides an ideal solution for workgroups or entire organizations that want to enable employees to work productively and efficiently no matter what their location—whether they're at home, out of town, or even out of the country.

Unlike conventional complex server software, the Apple Remote Access MultiPort Server is designed to streamline administrative tasks, while maximizing administrator productivity and control. The software installs in minutes and features sophisticated management capabilities, including industry-standard Simple Network Management Protocol (SNMP) support. This allows administrators to flexibly manage and maintain connections. Adding ports is simple, and the server features an automatically

generated activity log that can be exported to a variety of programs for further analysis.

On the client side, the Apple Remote Access Client for Macintosh software is also designed with efficiency and productivity in mind. From its single-step installation to such productivity-enhancing features as full System 7 integration and extensive connection-management capabilities, it provides everything users need to help them get their work done easily and efficiently—wherever they are.

Users can also be confident that their work will be secure. The Apple Remote Access MultiPort Server offers a host of sophisticated security features that allow administrators to maintain the integrity of the network. These features—such as password aging, location validation, and the ability to filter access to services—make it one of the most secure remote access servers available. And because its security architecture is supported by leading third-party security vendors, administrators can choose to augment the server's built-in security features with additional challenge-and-response security modules.





Apple Remote Access MultiPort Server

Ordering Information

Apple Remote Access MultiPort Server

Order No. M5214Z/B

- Apple Remote Access MultiPort Server software and installer (includes support for four ports)
- Apple Remote Access Client for Macintosh software and installer (with license to install software on up to four client systems); additional client software can be purchased separately
- Apple Remote Access Serial Card
- Apple RS-232 Cable

Apple Remote Access MultiPort Server 4-Port Expansion Kit

(Includes Apple Remote Access Serial Card and Apple RS-232 Cable)

Order No. M2384Z/B

Expands your Apple Remote Access MultiPort Server by four ports—up to a maximum of 16 ports

Apple Remote Access MultiPort Server X.25 Extension

Order No. M1998Z/A

Adds X.25 dial-in capability to your Apple Remote Access MultiPort Server and Client software. (Not available for Power Macintosh computers or Workgroup Servers 6150, 8150, or 9150.)

Apple Remote Access Client for Macintosh (single-pack)

Order No. M5227Z/B

Apple Remote Access Client for Macintosh 10-Pack

Order No. M2692Z/B

Apple Remote Access Client for Macintosh (Volume Licensing)

Client software can be volume licensed separately for quantities of 50 or more users; consult your authorized Apple reseller or representative for purchasing information.

Product specifications are subject to change. Check with your Apple reseller for the most current information about product specifications and configurations.

Technical Specifications

Administrator control and monitoring

- Ability to monitor and manage server activity by port and user
- Ability to broadcast messages or send them to selected users
- Ability to adjust connection time by user
- Ability to disconnect any single user or all users
- Built-in Simple Network Management Protocol (SNMP), enabling you to monitor the server from any SNMP-based network management station

Security

- User name and password authentication
- Adjustable password length
- Filtering of network services by account
- Ability to disallow client use of Save Password option
- Account disable after specified number of password failures
- Password aging
- External security architecture (for example, for providing challenge-and-response authentication through a third-party security module)
- Callback feature that verifies the user's identity by returning calls to a predetermined phone number
- Activity log for recording user and server activities
- Administrative password option

Modem support and scripts

- Supports any Hayes-compatible 9,600-bps or higher-speed modem with the appropriate script. Modem scripts for many popular modems are included:
 - V.fast modems: Motorola Codex 3260 Fast
 - V.32bis modems (14,400 bps): Hayes Ultra 144, Motorola Codex 3260, US Robotics Courier V.32bis
 - V.32 modems (9,600 bps): Hayes Ultra 96, Telebit T1600, UDS/Motorola 3225, UDS/Motorola 3227, US Robotics Sportster, US Robotics Worldport
- ISDN support: Hayes ISDN adapter
- 9,600-bps or higher-speed scripts included with the Apple Remote Access Client for Macintosh can also be used with the Apple Remote Access MultiPort Server
- Additional scripts may be available. Contact an authorized Apple reseller or representative or your modem manufacturer for more details.
- Administrators or other programmers familiar with connection control languages (CCLs) can also write the necessary scripts using the Apple Remote Access Modem Scripting Guide and Modem Workshop software, which are included with the Apple Remote Access MultiPort Server.

Network types supported

- Support for any AppleTalk network; the most common network choices include:
 - LocalTalk
 - Ethernet
 - Token Ring

Connection types supported

- Support for a range of connection types:
 - Standard telephone
 - Cellular¹
 - X.25¹
 - ISDN¹

Error detection/Data compression

- Includes several built-in components that allow for error-free and optimized delivery of data
 - Smart buffering (developed by Apple Computer, Inc.) for data-transfer optimization
 - MNP, an industry standard for error detection
 - V.42bis, an industry standard for data compression

Specifications

- Maximum number of simultaneous connections: 16
- User name maximum length: 31 characters
- Password maximum length: 8 characters
- Total number of user records: 8,192
- Maximum connect time: selectable
- Maximum number of activity log entries: 32,767

Licensing information

- Comes with license to install Apple Remote Access MultiPort software on a single Macintosh and to install Apple Remote Access Client for Macintosh software on up to four systems
- Additional client software must be purchased or licensed separately; consult your authorized Apple reseller or representative for information

Operating requirements

For the server side

- A Macintosh computer with one or more NuBus slots and at least 5MB of RAM, a Power Macintosh computer, or a Workgroup Server. For configurations with more than four ports, additional memory is required, and a high-performance system is recommended².
- Macintosh system software version 7.0 or later (version 7.1 or later recommended)
- A hard disk drive and an Apple SuperDrive floppy disk drive
- Apple Remote Access Serial Card and Apple RS-232 Cable
- One or more Hayes-compatible 9,600 bps/V.32 or higher-speed modems
- Apple Remote Access Client for Macintosh

For the client side

- A Macintosh Plus or later model with at least 4MB of RAM or a Power Macintosh computer
- Macintosh system software version 7.0 or later
- A hard disk drive
- An Apple or other Hayes-compatible modem (2,400 bps minimum; 9,600 bps or higher recommended) and appropriate modem cable, if needed

¹ X.25 support requires purchase of Apple Remote Access MultiPort Server X.25 Extension; ISDN or cellular support requires additional third-party products.

² Support for Macintosh computers that require 7-inch NuBus cards may not be available at this time; consult your authorized Apple reseller or representative.

Apple Computer, Inc.

1 Infinite Loop
Cupertino, CA 95014
(408) 996-1010
TLX 171-576

© 1994 Apple Computer, Inc. All rights reserved. Apple, the Apple logo, AppleTalk, LocalTalk, and Macintosh are trademarks of Apple Computer, Inc., registered in the U.S.A. and other countries. Apple SuperDrive, DialAssist, Finder, and Power Macintosh are trademarks of Apple Computer, Inc. NuBus is a trademark of Texas Instruments. Mention of non-Apple products is for informational purposes and constitutes neither an endorsement nor a recommendation. Apple assumes no responsibility with regard to the selection, performance, or use of these products. All understandings, agreements, or warranties, if any, take place directly between the vendors and the prospective users.

April 1994. Product specifications are subject to change without notice. Please see your Apple reseller for the most current information about product specifications and configurations. Printed in U.S.A.
L00514B